

Name: _____

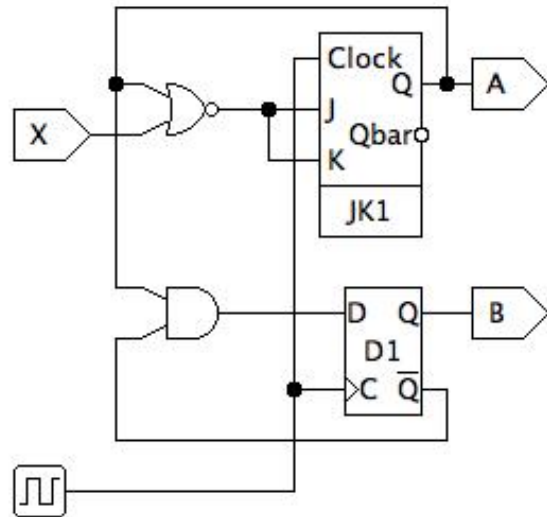
CIS 351 Sequential Circuit Homework

1. A JK flip-flop has the following characteristic table. In the space on the right, show how you can use a D flip-flop and some combinatorial logic to construct a JK flip-flop.

J	K	Q_n	Q_{n+1}
0	0	0	0
0	0	1	1
0	1	0	0
0	1	1	0
1	0	0	1
1	0	1	1
1	1	0	1
1	1	1	0

2. Complete the characteristic table for the circuit shown below: (See problem 1 for the definition of a JK flip-flop.)

X	A_n	B_n	A_{n+1}	B_{n+1}
0	0	0		
0	0	1		
0	1	0		
0	1	1		
1	0	0		
1	0	1		
1	1	0		
1	1	1		



3. Consider the sequential circuit shown below:

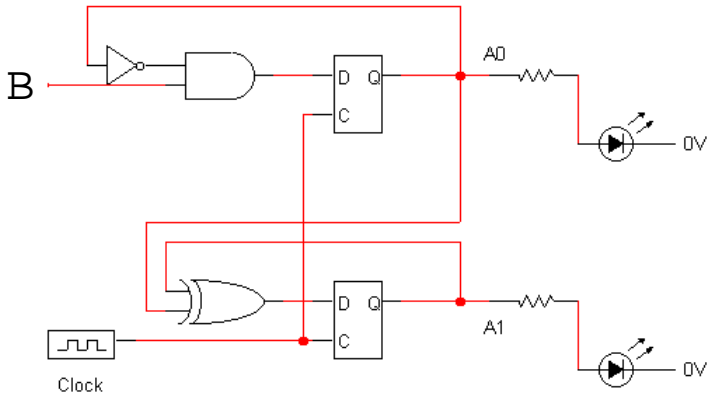
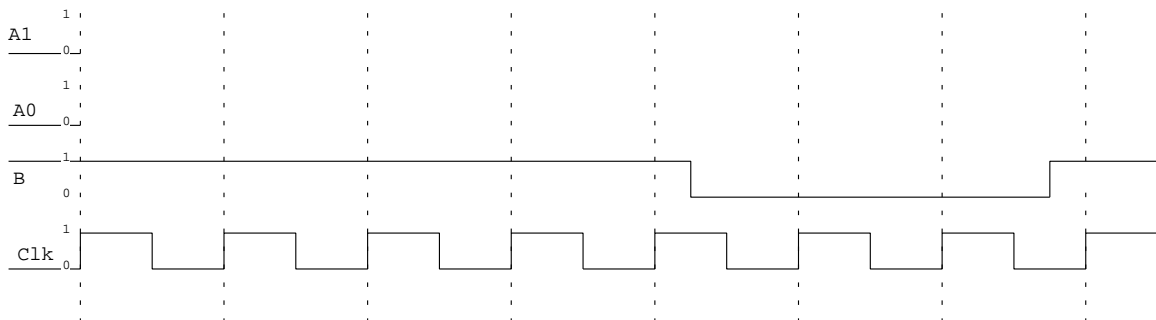


Figure 3-4

(a) First, complete the characteristic table. This circuit is clocked; and all flip flops are *positive-edge triggered*. Your answers should show the states of A_0 and A_1 after the next clock pulse.

Current state			State after next clock pulse	
B	A_0	A_1	A_0	A_1
0	0	0		
0	0	1		
0	1	0		
0	1	1		
1	0	0		
1	0	1		
1	1	0		
1	1	1		

(b) Now complete the following timing diagram (Δt not required). Again remember that the flip-flops are positive-edge triggered. This means that A_0 and A_1 will change **only** when the clock rises from 0 to 1!



Name: _____

4. Design a circuit that has the following characteristic table. (Hint: Connect two D-latches in a manner similar to that shown in problem 3.)

Current state			State after next clock pulse	
B	A_0	A_1	A_0	A_1
0	0	0	0	1
0	0	1	1	0
0	1	0	1	1
0	1	1	0	0
1	0	0	1	0
1	0	1	1	1
1	1	0	0	0
1	1	1	0	1

5. Design a sequential circuit that can add arbitrarily large numbers. This circuit will have three input pins: A_n , B_n , and “reset”. “Reset” indicates that a new addition is beginning. A_n and B_n take one “column” of input on each clock pulse. The circuit has one bit of output, which is the sum of the column currently being calculated.
6. Design a sequential circuit that will examine a sequence of characters and determine whether all five vowels are present in the string. The circuit will have one 8-bit input that will contain the ASCII representation of a character. On each clock tick, the input will contain the next character in the sequence. The circuit also has a 1-bit output that is initially **false** and becomes **true** once all five vowels have been observed. You may treat sub-circuits “is a”, “is e”, “is i”, “is o”, and “is u” as “black boxes”. (Note: Extra credit for the first two groups that correctly implement this circuit in JLS.)

Name: _____

7. For more practice (not due for credit): Consider the “old” automatic doors — the ones with sensors on the ground that tell the door when to open and close.
- (a) Design a finite state machine to describe the operation of a one-way door. Each sensor provides a binary input (the presence or absence of a person).
 - (b) Design a circuit to implement this state machine.

These doors have sensors on both sides because (1) you don’t want the door to hit anybody standing outside, and (2) you don’t want the door to close in somebody’s face.

To be clear: You are designing the circuit for one door. Typically, these doors come in pairs (an “in” and an “out”); each door will have its own circuit.



8. For more practice (not due for credit): Consider a simple DVD/BluRay player. The playback mode is controlled by three buttons: Play/Pause, Fast Forward, and Rewind.
- There are three “fast forward” speeds. To get to the faster speeds, press the fast forward button multiple times. Likewise for reverse.
- Pressing “Play” while fast forwarding or rewinding returns the player to the “normal” forward speed.
 - Pressing “Fast Forward” while in the highest speed returns the player to normal forward speed. Likewise for reverse.
 - Pressing “Rewind” while in fast forward mode reduces the speed one level. Likewise for Fast Forward.
- (a) Design a finite state machine to describe the operation of this player.
 - (b) Design a circuit to implement this state machine.